



Four Cities Disaster Preparedness Presentation

Presented by

Prince George's County Office of Homeland Security

Community Outreach Coordinator

Rasheed Plummer



Home Preparedness

- Preparedness Starts at Home.
- Plan
- Practice Your Plan
- Ensure that everyone in your home is knowledgeable of the plan
- Revise as needed





INSURANCE POLICY

Insurance Information

- Have knowledge of what your policy covers
- Possibly keep the insurance after hours number in your phone if you may need to access it
- If a disaster occurs at your home, contact your insurance provider immediately after ensuring the safety of your loved ones to open a claim



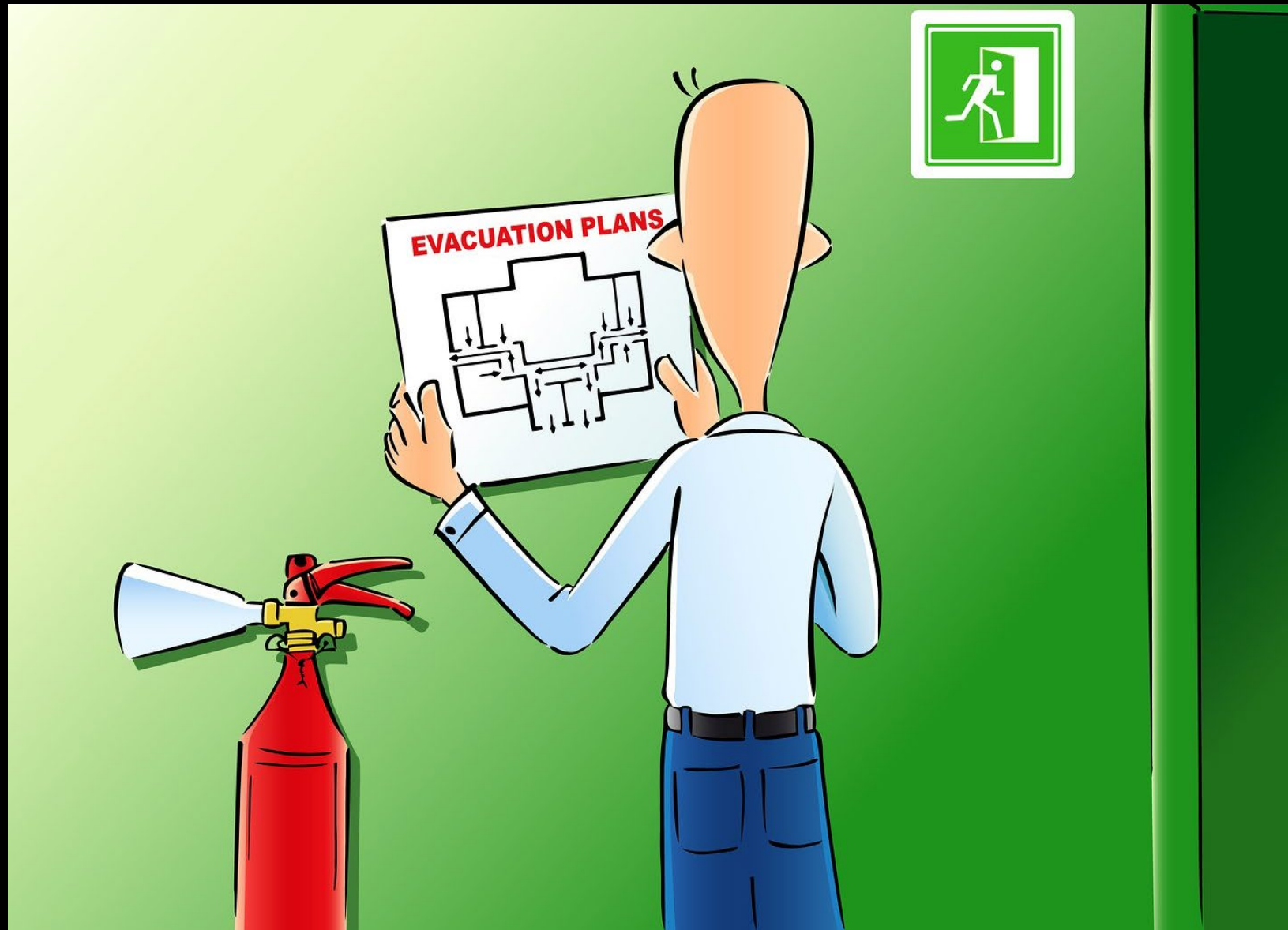
Downed Power Lines

- PEPCO 1-877-PEPCO62
- SMECO 1-877-74SMECO
- BGE 1-877-778-2222

EMERGENCY PLAN



*Do you and your
Family members
have an Evacuation
Plan for your home?*



How can I keep copies of vital records safely that I can access at a moments notice?

- Cloud Storage
- Copies in Go Kit
- Fire Safe
- Jump Drives

PROTECT YOUR VITAL RECORDS



In case of an emergency or disaster, consider storing and protecting the following types of documents:



Financial



Taxes



Estate Planning



Medical







Search

Prince Georges County Emergency Management Division

- Provides effective and orderly governmental control and coordination of the County's emergency response to reduce the impact such events may have on Prince George's County Residents
- Serves as the liaison and coordinator of State/Federal financial assistance for municipalities and County residents following County declared disasters



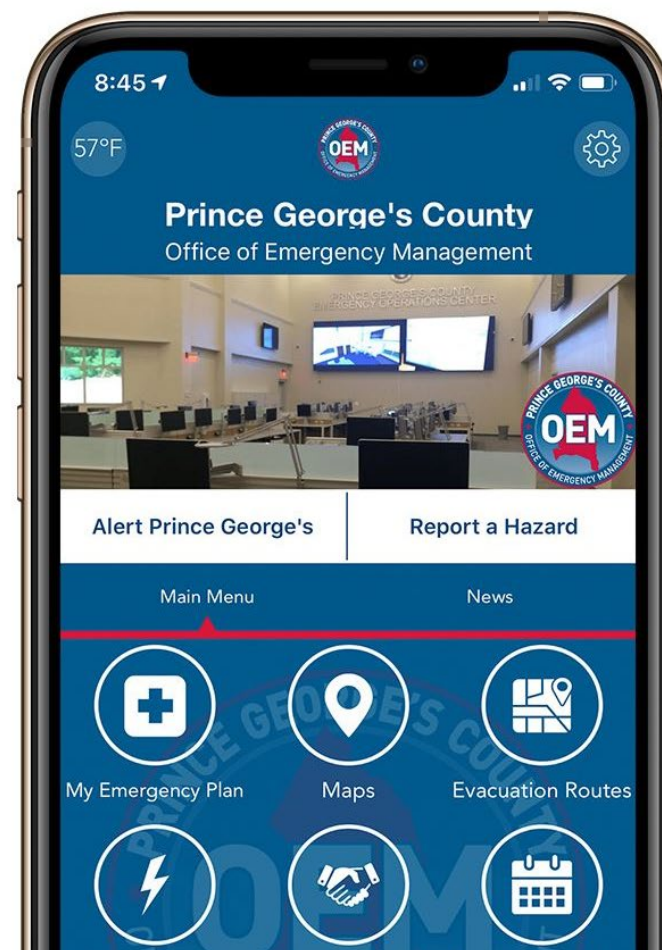


OEM App Functions

- Push Notifications
- Emergency Evacuation Routes
- Power Outage Maps
- Social Media
- Hazard Reporting

Download our app today!

Search: Prince George's OEM



Built by:



Alert Prince George's

- Emergency Alerts
- Emergency Notifications
- Real Time Information
- Public Safety Incidents
- Severe Weather
- Traffic Conditions



National Weather Service

- **Advisory**- An advisory is issued when a hazardous weather or hydrologic event is occurring, imminent, or likely.
- **Watch** - A watch is used when the risk of a hazardous weather or hydrologic event has increased significantly, but its occurrence, location or timing is still uncertain.
- **Warning** - A warning is issued when a hazardous weather or hydrologic event is occurring, imminent or likely.

